



System requirements

JMS 4.0 Mold Line

Edition: 010426

From: MGO
To: TechNet

cc:

Adapted 16.04.26

Version		.48
Author		Marco Gövert
First version		01.01.2014
Last update		01.04.2026

This edition refers to the EROWA JMS 4.0 MoldLine software and all subsequent releases and changes.
© Copyright EROWA Software Services GmbH, 2024.

ENGLISH

1	General	4
2	Customer system preparations.....	4
2.1	Support	4
2.2	Hardware	4
2.3	Software.....	5
2.4	Naming conventions for computers	5
3	PC requirements.....	6
3.1	Devices and interfaces	6
3.2	Server PC requirements	7
3.2.1	Server for JMS 4.0 MoldLine software	7
3.2.2	Optional database server	7
3.3	Client PC requirements	8
3.3.1	Online workstation	8
3.3.2	Offline workstation	8
3.4	Network topology	10
3.5	Data exchange and communication between hardware components.....	11
3.5.1	Data exchange.....	11
3.5.2	communication matrix.....	12
4	Firewall settings	13
5	Antivirus program settings	17
6	User permissions	18
7	MS Windows cumulative updates and other Windows updates.....	19
7.1	Procedure for MS Windows updates	19
8	System and data backup	20
8.1	Liability.....	20
8.2	Backing up the JMS 4.0 ML installation directory.....	20
8.3	Database backup.....	20
8.4	Backing up the JMS 4.0 ML DIRSTRUCT directory.....	20
9	Remote maintenance	21
9.1	Requirements	21
9.2	Technical data and security	21
9.3	Remote maintenance connection for JMS 4.0 ML software.....	21

1 General

This document describes the system requirements for a JMS 4.0 MoldLine installation. Including PC hardware specifications, network topology, user permissions, firewall and antivirus configuration, procedures for operating system updates and data backup.

2 Customer system preparations

Before installing JMS 4.0 ML, the customer is requested to carry out the necessary preparations in the IT environment in accordance with the specifications listed in this document. The customer is responsible for implementing these points. Any additional work resulting from incomplete or incorrect preparation will be invoiced separately.

2.1 Support

The customer must provide on-site IT support throughout the entire installation.

2.2 Hardware

General	All necessary additional hardware must be fully installed and tested on all PCs.
PC location:	The PCs must be set up in the designated locations.
Ethernet connection:	All PCs must be connected to the dedicated JMS 4.0 ML server via LAN/Ethernet. <ul style="list-style-type: none"> ■ Protocol: TCP/IPv4, at least 1 Gbit/s ■ Protocol: TCP/IPv6 must not be enabled on the JMS 4.0 ML PCs in the production network ■ It is recommended that other protocols be disabled! ■ DNS: DNS server or name resolution via HOSTS file ■ Network type: set up as a private network
Network adapter:	Automatic power management for network adapters must be disabled
USB controller:	The automatic power management of the USB controllers (USB root hub / USB mass storage device) must be disabled.

2.3 Software

Operating system:	<p>A licensed operating system, including all service packs and hotfixes, must be installed and tested on all PCs.</p> <ul style="list-style-type: none"> ■ MS Visual C++ 2005 Redistributable Package and MS Visual C++ 2010 Redistributable Package must be installed (MS Windows 10) ■ Microsoft .NET Framework 3.5 & 4.6 or higher must be installed ■ Automatic memory optimization and deletion of temporary files (MS Windows 10) must be disabled, as otherwise the operating system may delete temporary data required for the unrestricted functionality of the JMS 4.0 MoldLine software ■ Automatic power management (all MS Windows operating systems) for network adapters and USB controllers (USB root hub / USB mass storage device) must be disabled, as otherwise problems may occur in communication with the connected hardware components (machines, robots, etc. / RFID chip readers) ■ All settings specified in this document must be made for each Windows user
Internet browser:	Each PC must be equipped with an Internet browser (MS Edge, Mozilla Firefox, Google Chrome, Opera, or similar).
Remote maintenance:	Each PC must have Internet access for remote maintenance.
Network shares:	Folders containing NC programs must be accessible (possibly shared via a network – this also applies to connected machines).
Access rights:	The JMS 4.0 ML installation requires local administrator rights
Virus protection:	Performance problems may occur with the highest security settings. The JMS 4.0 ML root directory (%zuproot%) must be excluded from constant virus scans
Firewall:	The local firewall must be disabled.
Users:	Software users must be familiar with the use of PCs.

2.4 Naming conventions for computers

For detailed information, please refer to the Microsoft support page:

<https://support.microsoft.com/de-de/help/909264/naming-conventions-in-active-directory-for-computers-domains-sites-and>

The maximum length of the computer name is 15 characters.

3 PC requirements

The customer shall ensure that all necessary hardware, software, and network components are provided in full for each intended PC in accordance with the requirements defined in this document. Each PC must be equipped with a newly installed, clean operating system that is free of previously used software or legacy files. In addition, the customer is responsible for procuring and providing all necessary software licenses.

3.1 Devices and interfaces

Each server and client PC must meet the following requirements:

	Minimum requirement	Recommended
Screen size	≥ 24" color	
Screen resolution	Full HD (1920 x 1080)	
USB interface	1 x dongle (at least one PC in the network) 1 x RFID reader (optional) 1 x mouse 1 x keyboard	
Serial interface (RS232, 9-pin)	1 x RFID reader (optional, until year of manufacture 2022) 1 x machine (optional) 1 x robot (Erowa robot up to year of manufacture 2000) 1 x EWIS Rapid (optional)	
Network interface	1 x RJ45 (LAN) 2 x RJ45 (LAN) applies to online workstation (see section 3.3.1)	
Internet	Remote maintenance access for EROWA Software Services Support via TeamViewer	
Other	Uninterruptible power supply; recommended for online workstation (see section 3.3.1)	

3.2 Server PC requirements

3.2.1 Server for JMS 4.0 MoldLine software

The server for JMS 4.0 MoldLine is exclusively for the process control system software; no other software or database may be installed on this server.

	Minimum requirements	Recommended
Process	Current generation 4 logical processors	Current generation ≥ 6 logical processors
RAM	At least 16 GB (≥ DDR4)	≥ 16 GB (≥ DDR4)
Hard	2x 250 GB, SAS RAID, 50 GB free SSD / NVMe	≥ 2x 500 GB, SSD or NVMe SAS RAID
Network	1Gbit/s Ethernet	
Operating	MS Windows Server 2025 / 2022 ¹ / 2019 / 2016 MS Windows 11 / 10 Server OS as full installation (full GUI) Note: MS Windows Server 2016 or higher is required for JMS 4.0 ML Reporting Web. ¹ MS Windows Server 2022 / MS Windows 11 Pro/Enterprise from JMS 4.0 MoldLine v11 B1218 SP6 Patch 3023	
Virtualization technology	VMware ESXi MS Hyper-V Type 1 / Type 2	

3.2.2 Optional database server

Optional database server is recommended for medium to large systems

	Minimum requirements	Recommended
Process	Current generation 4 logical processors	Current generation ≥ 6 logical processors
RAM	At least 16 GB (≥ DDR4)	≥ 16 GB (≥ DDR4)
Hard	2x 160 GB, SAS RAID, 50 GB free SSD / NVMe	≥ 2x 250 GB, 15,000 rpm SSD or NVMe SAS RAID
Network	1Gbit/s Ethernet	
Operating	MS Windows Server 2025 / 2022 ¹ / 2019 / 2016 MS Windows 11 / 10 Pro Enterprise Server OS as full installation (full GUI) ¹ MS Windows Server 2022 / MS Windows 11 Pro/Enterprise from JMS 4.0 ML v11 B1218 SP6 Patch 3023	
Virtualization technology	VMware ESXi MS Hyper-V Type 1 / Type 2	

3.3 Client PC requirements

3.3.1 Online workstation

These requirements are suitable for JMS 4.0 MoldLine JobManager

	Minimum requirements	Recommended
Process	Current generation 4 logical processors	Current generation 6 logical processors
RAM	16 GB (≥ e DDR4)	≥ 16 GB (≥ e DDR4)
Hard drive	2x 250 GB, SATA II, 50 GB free SSD / NVMe Additional ≥ 500 GB free for file logging (2nd partition recommended) (HDD)	≥ 2x 500 GB, SSD or NVMe SATA II RAID ⁽¹⁾ (⁽¹⁾ if workstation is also used as JMS 4.0 ML server)
Network	1Gbit/s Ethernet	
Operating	MS Windows 11 Pro ¹ / MS Windows 10 Pro Note: Restrictions depending on the availability of machine drivers, see chapter 3.3.3! ¹ MS Windows 11 from JMS 4.0 ML v11 B1218 SP6 Patch 3023	
Serial interface	Depends on connected devices (see section 3.1)	
Virtualization	Virtualization of the online workstation is not permitted.	

3.3.2 Offline workstation

Requirements are suitable for JMS 4.0 ML organization, JMS 4.0 ML setup, JMS 4.0 ML preset, JMS 4.0 ML post-processor, and JMS 4.0 ML JobGenerator workstations.

	Minimum	Recommended
Process	Current generation 4 logical processors	Current generation 6 logical processors
RAM	16 GB (≥ DDR4)	≥ 16 GB (≥ DDR4)
Hard	500 GB SATA II, SSD / NVMe	1 TB SATA II, SSD / NVMe
Network	1Gbit/s Ethernet	
Operating	MS Windows 11 Pro ¹ / MS Windows 10 Pro / MS Windows 10 Enterprise LTSC ¹ MS Windows 11 from JMS 4.0 ML v11 B1218 SP6 Patch 3023	
Serial interface	Depending on connected devices (see section 3.1)	

NOTE: Outdated operating systems such as Win7/8 and WS2003/2008/2012 are no longer supported! Currently supported operating systems are Windows 11/10 and Windows Server 2025/2022/2019/2016.

Note: Several MS Visual C++ Redistributable (2005/2010/2015-2022) packages are installed during setup. If the target operating system is not fully updated (with missing important KBs) or for any other reason, vcredist may not be installed. In this case, you can download it from <https://www.microsoft.com/en-us/download/details.aspx?id=48145>.

3.3.2.1 Add-on for measurement machine workstations

Requirements are suitable for JMS 4.0 ML Preset and JMS 4.0 ML QM workstations

	Minimum requirement	Recommended
Measurement machine software	Software runs under MS Windows 11 ¹ / MS Windows 10 Pro / MS Windows 10 Enterprise LTSC	MS Windows 11 ¹ / MS Windows 10 Pro / MS Windows 10 Enterprise LTSC
	Software can be started externally ¹ MS Windows 11 from JMS 4.0 ML v11 B1218 SP6 Patch 3023	
Offset data	Offset data is neutral; not transformed	
Measurement macros	Suitable measurement macros for offset measurement of workpieces and electrodes are available	

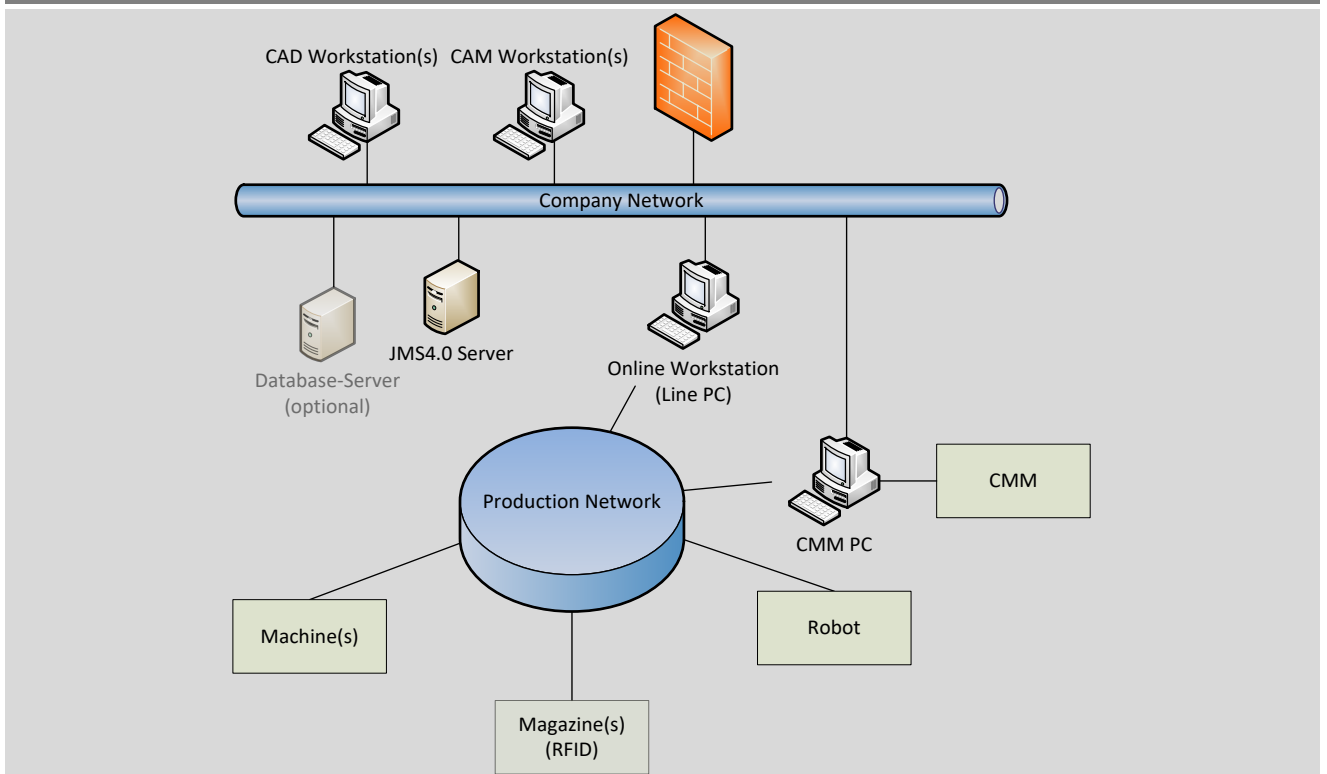
3.4 Network topology

The JMS 4.0 MoldLine software places high demands on network performance, as it is network-intensive and requires stable and powerful communication between the server, workstations, and machine components.

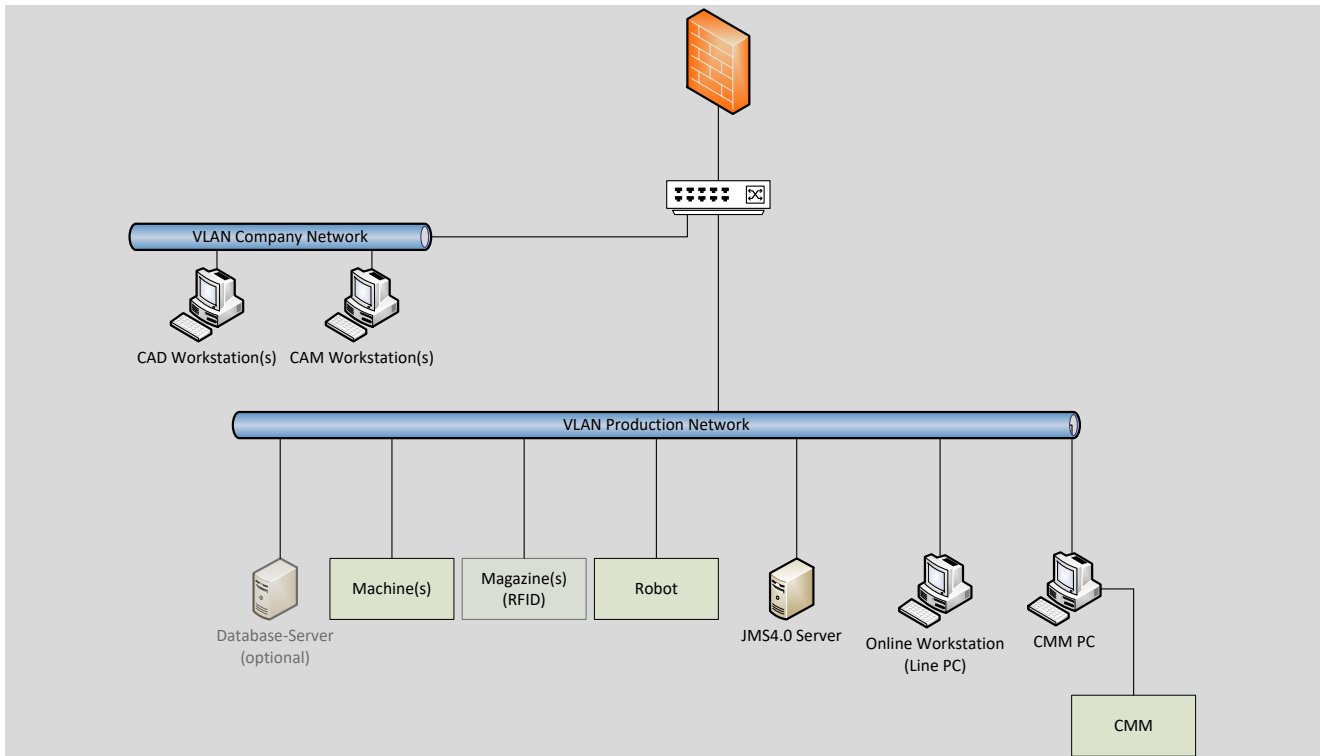
A correctly configured network environment – especially when using VLANs – is essential for this.

Note: If VLANs are not configured correctly, we **cannot** guarantee the proper functioning or expected performance of the JMS 4.0 MoldLine software.

Network construction with physically separated production network (recommended)



Network construction with VLAN



3.5 Data exchange and communication between hardware components

3.5.1 Data exchange

	JMS 4.0 ML Server	Database Server	Online Workstation	Offline Workstation	Machines	Measuring machine
JMS 4.0 ML Server			⊗	⊗	⊗ ⁽¹⁾	⊗
Database Server						
Online Workstation	⊗				⊗	
Offline Workstation	⊗					
Machines	⊗ ⁽¹⁾		⊗			
Measuring machine	⊗		⊗			

⁽¹⁾ only if the online workstation is also used as a JMS 4.0 MoldLine server

3.5.2 communication matrix

	JMS 4.0 ML Server	Database Server	Online Workstation	Offline Workstation	Machines	Measuring machine
JMS 4.0 ML Server		⊗	⊗	⊗	⊗ ⁽¹⁾	⊗
Database Server	⊗		⊗	⊗		⊗
Online Workstation	⊗	⊗			⊗	⊗ ⁽²⁾
Offline Workstation	⊗	⊗				
Machines	⊗ ⁽¹⁾		⊗			
Measuring machine	⊗	⊗	⊗ ⁽²⁾			

(1) only if the online workstation is also used as a JMS 4.0 MoldLine server

(2) only if automatic measurement (QM) is implemented

4 Firewall settings

The customer's IT department must ensure that the following communication ports are enabled on all computers used for the EROWA Software Services software and are not blocked by any firewall settings or other settings.

Port no.	Used for	Description	with Ephemeral-Ports	without Ephemeral-Ports
80 (TCP) 389 (TCP) 443 (TCP)	EROWA MultiCell Web Server (based on Microsoft SQL Express)	This port must be enabled on all computers (servers and workstations) that require a connection to the reporting database (MS SQL Express) via WebService. Port 80 (Hypertext Transfer Protocol - HTTP) / Port 443 (HTTP Secure)	Inbound (Server)	Inbound (Server), Outbound (Client)
80 (TCP) 89 (TCP)	EROWA RoboSpa 2.0 EROWA RoboClean Other cleaning machines with WebIO connection (Abag, Teknox, etc.)	These ports must be enabled on the computer (JobManager workstation) that requires a connection to the WebIO module Port 80 for WebIO module WuT #57630; Port 42280 for WebIO modules Wut #57730 – see also WuT WebIO module	Inbound (Machine)	Inbound (Machine), Outbound (Workstation)
1112 (TCP)	Mitsubishi DNC interface	This port must be enabled on the computer (JobManager workstation) that requires a connection to a Mitsubishi sinker EDM or wire EDM machine.	Inbound (Machine)	Inbound (Machine), Outbound (JobManager)
1112 (TCP) 1114 (TCP)	MCPPro DNC interface	These ports must be enabled on the computer (JobManager workstation) that requires a connection to an OI sinker EDM machine.	Inbound (Machine)	Inbound (Machine), Outbound (JobManager)
1200 (TCP)	EROWA Arcorunner interface	This port must be enabled on the Erowa measuring machine workstation and the JobManager workstation.	Inbound (Interface)	Inbound (Maschine), Outbound (JobManager)
3306 (TCP)	Database connection	This port must be enabled on all computers (servers and workstations).	Inbound (Server)	Inbound (Server), Outbound (Client)
4711 (TCP)	Mafac cleaning machine	This port must be enabled on the computer (JobManager workstation) that requires a connection to the WebIO module	Inbound (Machine)	Inbound (Machine), Outbound (JobManager)

4713 (TCP)	CS.Flash-Ident	This port must be enabled on the computer (JobManager workstation) that requires a connection to CS.Flash-Ident.	Inbound (Machine)	Inbound (Machine), Outbound (JobManager)
4840 (TCP)	EROWA RoboSpa 3.0	These ports must be enabled on the computer (JobManager workstation) that requires a connection to the cleaning machine	Inbound (Machine)	Inbound (Maschine), Outbound (JobManager)
4941 (TCP)	ZK Transclean	These ports must be enabled on the computer (JobManager workstation) that requires a connection to the cleaning machine	Inbound (Machine)	Inbound (Maschine), Outbound (JobManager)
5000 (TCP)	OpenAPI	These ports must be enabled on the computer (JobManager workstation) that requires a connection to the machine	Inbound (API)	Inbound (API), Outbound (Client)
5001 (TCP) 8193 (TCP) 11212 (TCP)	Makino MML interface	These ports must be enabled on the computer (JobManager workstation) that requires a connection to the Makino milling or wire EDM machine.	Inbound (Maschine)	Inbound (Machine), Outbound (JobManager)
5001 (TCP)	RESTAPI		Inbound (API)	Inbound (API), Outbound (Client)
8193 (TCP)	Fanuc Focas interface	This port must be enabled on the computer (JobManager workstation) that requires a connection to a machine with Fanuc control.	Inbound (Machine)	Inbound (Maschine), Outbound (JobManager)
8888 (TCP) 8889 (TCP)	Zeiss Calypso preset module interface	These ports must be enabled on the Zeiss measuring machine workstation and the JobManager workstation.	Inbound (Zeiss)	Inbound (Zeiss), Outbound (JobManager)
19000 (TCP)	Heidenhain DCOM interface	This port must be enabled on the computer (JobManager workstation) that requires a connection to a machine with Heidenhain control (iTNC530).	Inbound (Machine)	Inbound (Maschine), Outbound (JobManager)
19003 (TCP), 19010- 19034 (TCP)	Heidenhain DCOM interface	These ports must be enabled on the computer (JobManager workstation) that requires a connection to a machine with Heidenhain control (TNC640).	Inbound (Machine)	Inbound (Maschine), Outbound (JobManager) 19010-19034 Inbound (Jobmanager)

42280 (TCP)	WuT WebIO module	This port must be enabled on the computer (JobManager workstation) that requires a connection to the WebIO module. WebIO module Wut #57730.	Inbound (Machine)	Inbound (Maschine), Outbound (JobManager)
45301 45311/45312 45321 45331 45341/45342 etc. all (TCP)	WinstatCellDriver (WCD) for machines with XML interface	These ports must be enabled on the computer (JobManager workstation) that requires a connection to a machine (e.g., Roeders, Exeron EDM, GFMS AgieVision EDM & WEDM jDNC interface, etc.) via an XML interface. Note: Two ports are always required per machine (e.g. 45301/45302, then 45311/45312 for an additional machine, etc.).	Inbound (Maschine)	Inbound (Machine), Outbound (JobManager)
49152 (UDP) 49153 (TCP) 49154 (TCP)	eConnectivity interface for GFMS HMI / HMI 2; CT DPCControl; CT Millennium	These ports must be enabled on the computer (JobManager workstation) that requires a connection to a GFMS machine	Inbound (Machine)	Inbound (Machine), Outbound (JobManager)
49152 (UDP) 49153 (TCP) 49154 (TCP) 51001 (TCP)	eConnectivity interface for GFMS Uniqua	These ports must be enabled on the computer (JobManager workstation) that needs a connection to a GFMS machine. Note: If more than one machine is controlled from the line PC, four additional ports are required for each machine (49252/49253/49354/51002, etc.).	Inbound (Maschine)	Inbound (Maschine), Outbound (JobManager)
49200 (TCP)	Makino MEL interface	This port must be enabled on the computer (JobManager workstation) that requires a connection to the Makino sinker EDM machine.	Inbound (Machine)	Inbound (Maschine), Outbound (JobManager)
49876 (TCP)	Web service Cassini WebServer	This port must be enabled on all computers (servers and workstations) that require a connection to the database via WebService	Inbound (Webserver)	Inbound (Webserver), Outbound (Client)
49877 (TCP)	CSNetWebServices			
55551 (TCP)	EROWA Robot (from 2002 onwards)	These ports must be enabled on the computer (JobManager workstation)		

		that requires a connection to the EROWA robot.		
55556 (TCP)	EROWA Robot with ECU300 (from 2017)	These ports must be enabled on the computer (JobManager workstation) that requires a connection to the EROWA robot.	Inbound (Robot)	Inbound (Robot), Outbound (JobManager-Client)



The list above only contains the most commonly used communication ports. Depending on the machine or hardware connection used, it may be necessary to enable additional ports. These will be specified individually by an EROWA Software Services technician during commissioning and must be enabled by the customer's IT department on the relevant systems.

Please note that the port numbers actually used may differ from those specified in the list in individual cases. In such cases, the customer's IT department is responsible for enabling the corresponding ports.

Note:

If problems arise during commissioning that may be caused by firewall settings, the customer's IT department must be able to temporarily disable the firewall. Once the analysis has been completed and provided that the cause is not related to the firewall configuration, the firewall can be reactivated at a later date in consultation with the responsible EROWA Software Services technician.

5 Antivirus program settings

The customer's IT department must ensure that the following settings are configured in any antivirus program used on all computers that are used for the EROWA Software Services software.

Directories or files	used for (server or workstations)	Description
Installation directory of the database (e.g. C:\Program Files\MariaDB)	Database (application or database server)	This directory on the database server must be completely excluded from the virus scanner.
Installation directory of the JMSPRO application (e.g. C:\JMSPRO)	Application server	This directory on the application server must be completely excluded from the virus scanner
ERP/PPS, CAD/CAM, and NC files (e.g. *.bef, *.dmi, *.exp, *.i, *.h, *.nc, *.tap, *.txt, *.xml, etc.)	Application server & workstations	All ERP/PPS, machine, production, and CAD/CAM-related file types must be excluded from the scan. File types not specified can be specified by the EROWA Software Services technician during commissioning.
Dirstruct JMSPRO	Application servers & workstations	If JMSPRO Dirstruct is already scanned on the server when accessed (on-access), it should be excluded from the scan on the workstations.
Directory %temp%\winstatplus	Application server & workstations	The temporary directory used by the JMSPRO application must be excluded from the scan on all workstations. Valid until JMS®Pro v10.7
Directory %appdata%\winstatplus	Application servers & workstations	The temporary directory used by the JMSPRO application must be excluded from the scan on all workstations. Valid from JMS®Pro v10.9



- The **heuristic scan mode** of the antivirus program used should be **disabled**.
- If problems occur during startup that could be caused by the antivirus program, the **customer's IT department** must enable **temporary deactivation** of the program.
- If it turns out that the antivirus program is **not** the cause, it can be reactivated **after** consulting the responsible EROWA Software Services technician.

7 MS Windows cumulative updates and other Windows updates

7.1 Procedure for MS Windows updates

This policy applies exclusively to updating the operating system version currently in use and expressly excludes upgrades to a higher version. Any upgrade to a higher operating system is not permitted without prior consultation with EROWA. Before performing such an upgrade, it is essential to check whether the installed JMS 4.0 MoldLine version is approved for the new operating system.

The installation of security patches, service packs, or other updates for Microsoft Windows should be controlled and targeted. This measure is to be understood as a defined maintenance activity that takes into account the production environment, including the automation cell or automation line.

Before installing the updates, all running JobManager instances must be stopped and all JMS 4.0 MoldLine applications must be closed properly on both the server and the workstations.

8 System and data backup

The customer must provide a data backup program (e.g., Symantec, McAfee, Acronis, etc.). The customer must use this data backup program to create a complete image of the hard disk or the corresponding partition of the hard disk before and after installing JMS 4.0 ML.

This image and the data backup program must be available during the installation process and during maintenance upgrades.

The customer is responsible for backing up the JMS 4.0 ML database. It is recommended that the database content be exported and backed up regularly. JMS 4.0 ML offers various tools for this purpose.

8.1 Liability

EROWA Software Services GmbH accepts no liability for damage or loss of work and/or data resulting from improper use of the JMS 4.0 ML software or faulty backups.

8.2 Backing up the JMS 4.0 ML installation directory

The JMS 4.0 ML directory must be backed up once after commissioning and should be backed up after every change (by online support or a technician).

8.3 Database backup

The frequency of database backups depends on the level of automation installed. The higher the level of automation, the more often a backup should be performed:

- For lines, backups should be performed once or twice a day
- For a cell with JobManager, backups should be performed once a day
- For JobGenerators or PostProcessors, one or two backups per week are sufficient

8.4 Backing up the JMS 4.0 ML DIRSTRUCT directory

The Dirstruct directory should also be backed up. However, as the content continues to grow, an incremental backup is recommended.

9 Remote maintenance

EROWA Software Services GmbH uses TeamViewer (www.teamviewer.com) as standard for remote maintenance.

To ensure optimal support, EROWA Software Services GmbH expects a remote maintenance program to be available on the JMS 4.0 ML server and on the JMS 4.0 ML clients.

Remote maintenance enables EROWA Software Services GmbH to provide customers with direct support for user questions on their applications.

9.1 Requirements

The customer must meet the following requirements:

- The PC must have direct access to the Internet (metaframes, terminal servers, etc. are not supported).
- If access rights are required for Internet access, these must be available for installation and maintenance.

9.2 Technical data and security

Software license

Customers do not need a software license to use TeamViewer. TeamViewer can be installed on multiple JMS 4.0 ML servers/clients.

Installation

The TeamViewer software does not require installation or configuration. TeamViewer also works behind a firewall.

Partner ID, session password, and connection setup

The randomly generated partner ID and session password ensure that you are connected to the right consultant.

No remote control rights without express permission

Security-related functions such as file transfer require additional manual confirmation from the remote partner. If necessary, remote control can be interrupted at any time.

256-bit encryption

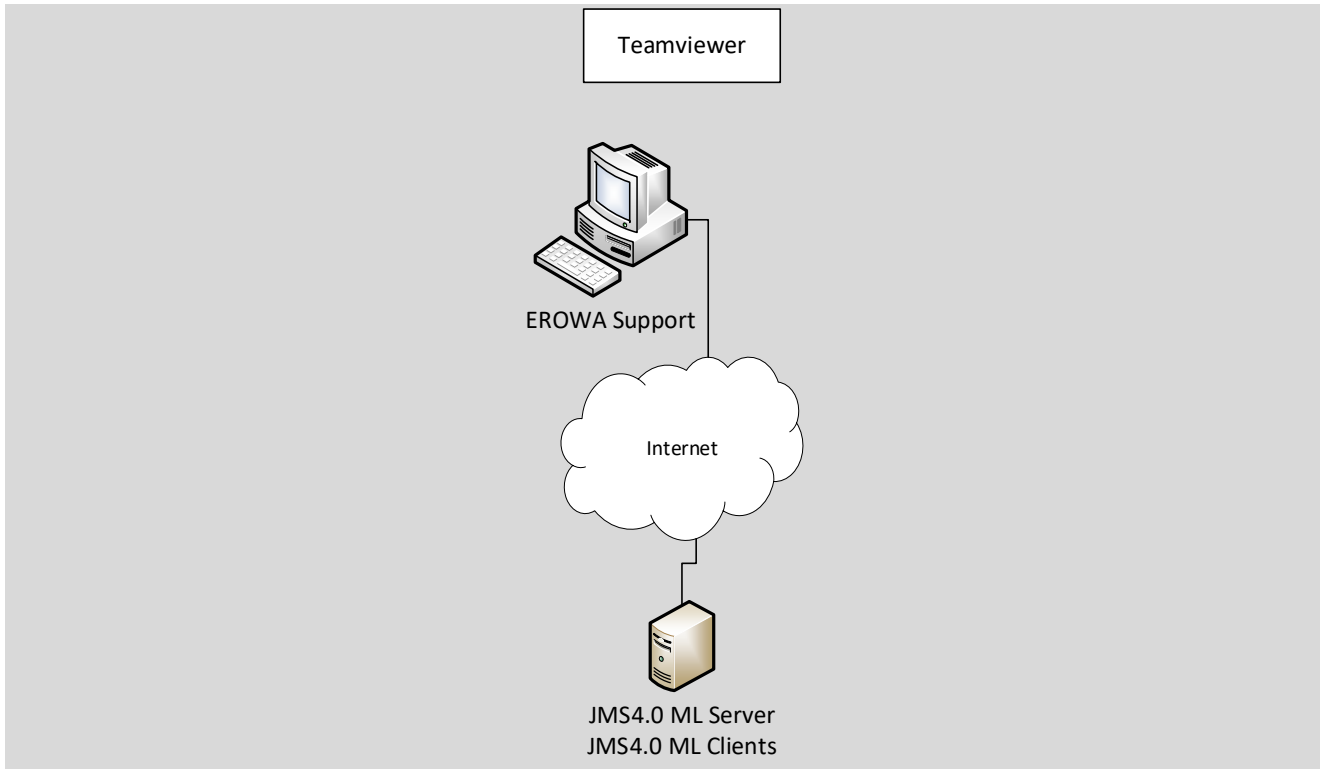
Every TeamViewer session is 256-bit encrypted with RSA public/private key exchange and AES session encoding, which complies with the https/SSL standard.

Signature code

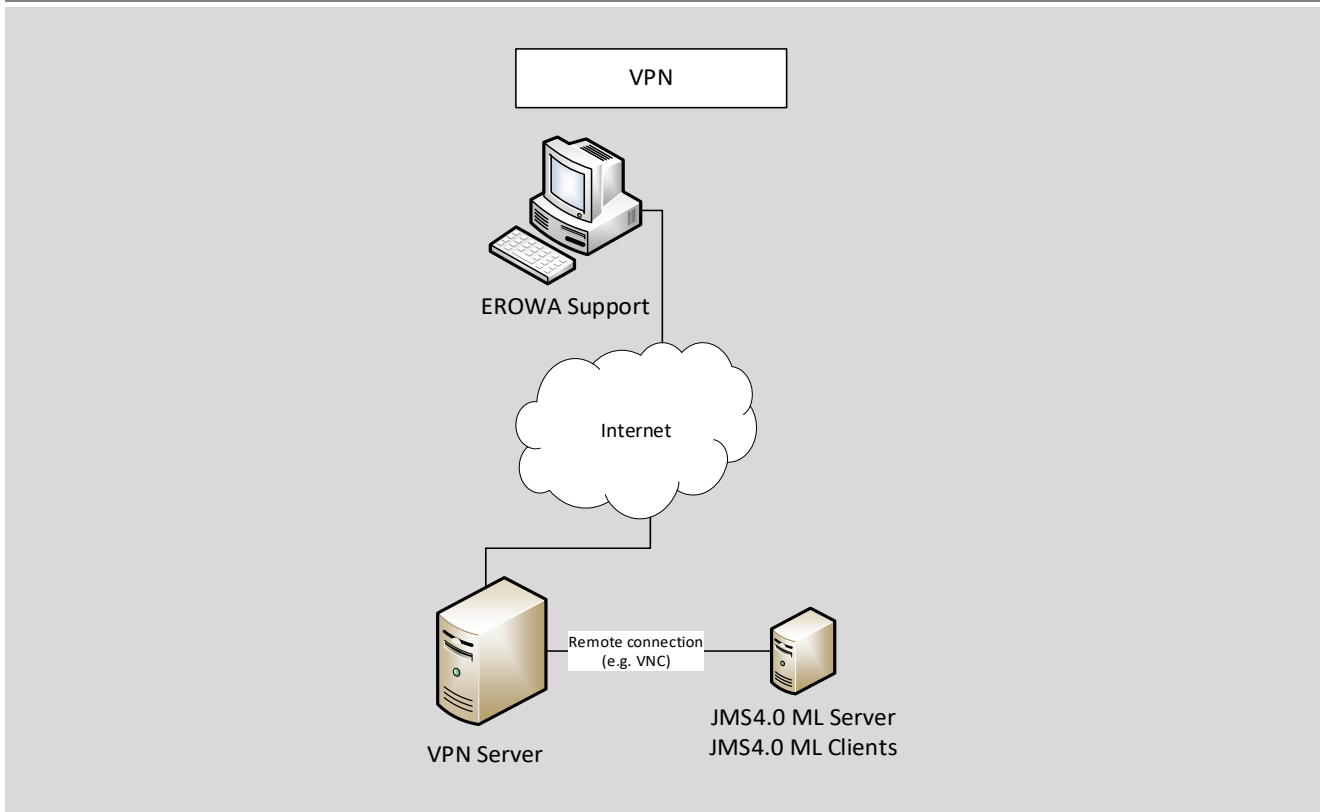
All program files are signed with VeriSign.

9.3 Remote maintenance connection for JMS 4.0 ML software

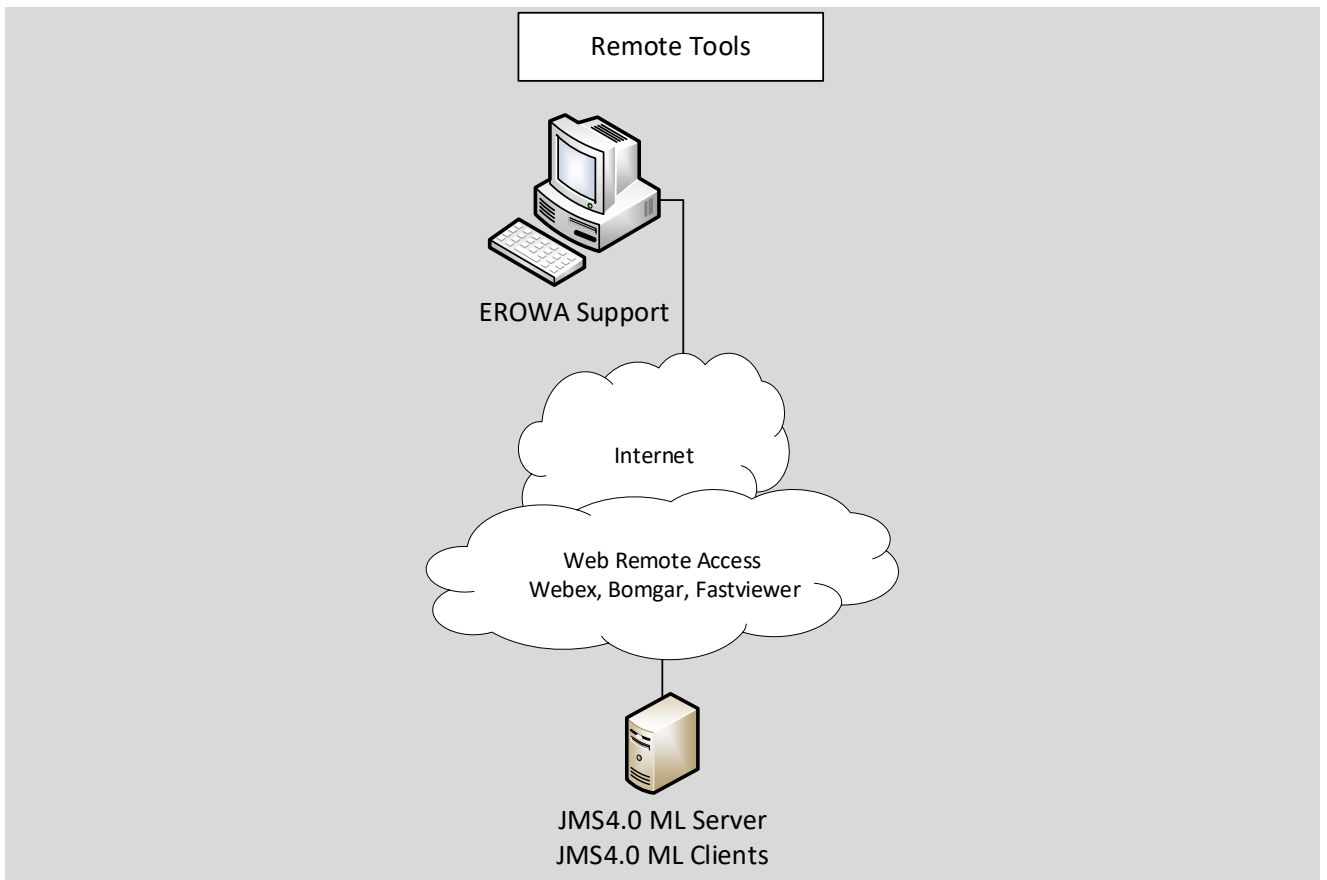
Remote maintenance access via TeamViewer (standard)



Remote maintenance access via VPN



Remote maintenance access via Remote Tools



Please note: For remote maintenance access that is not to be set up using the TeamViewer product, it is the customer's responsibility to ensure that the necessary additional software is installed, configured, and operational on all servers/clients. EROWA Software Services does not provide this necessary additional software, nor does it set it up!